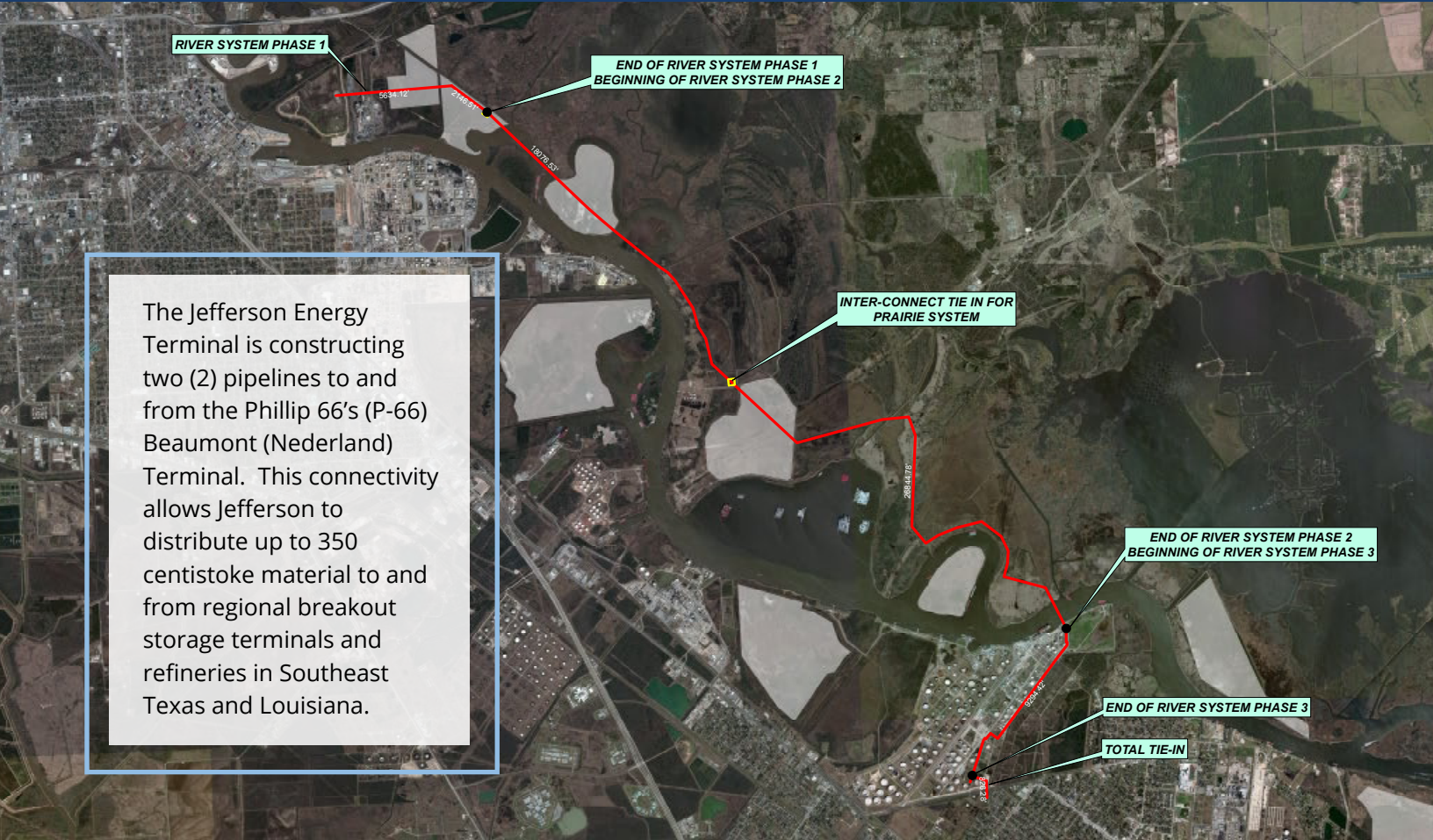




JEFFERSON

ENERGY PIPELINES



The Jefferson Energy Terminal is constructing two (2) pipelines to and from the Phillip 66's (P-66) Beaumont (Nederland) Terminal. This connectivity allows Jefferson to distribute up to 350 centistoke material to and from regional breakout storage terminals and refineries in Southeast Texas and Louisiana.

PIPELINE CONNECTIVITY TO PHILLIPS 66 TERMINAL

Outbound to Phillips 66: - Size: 24" Diameter

Origin	Jefferson Energy Beaumont Terminal
Terminus	Phillips 66 Beaumont Terminal 12-mile pipeline
Capacity	200,000 bpd outbound
Product	Blended heavy and light crude oil, condensates, and feedstocks
Segregation	Minimum Batch Size = 40,000 bbls
Operator	P-66
Service	Commencing in Q4 2017

Inbound from Phillips 66 - Size: 12" Diameter

Origin	Phillips 66 Beaumont Terminal
Terminus	Jefferson Energy Beaumont Terminal 12-mile pipeline
Capacity	80,000 bpd inbound
Product	Light crude oil, condensates, and feedstocks
Segregation	Minimum Batch Size = 25,000 bbls
Operator	P-66
Service	Commencing in Q4 2017



PIPELINE CONNECTIVITY TO LOUISIANA REFINERIES

Bayou Bridge Pipeline Capabilities:

- Origin at Nederland - Delivery to Lake Charles and St. James, Louisiana
- Light and heavy service
- Lake Charles in-service Q1 2016
- St. James in-service 2nd half of 2017

Interested Shippers Contact:

Frank Rodriguez

Office: (281) 677.4900, ext. 214

Mobile: (713) 906.5884

E-mail: frodriguez@jeffersonenergyco.com

Open Season Q2 2016

Construction Begins Q4 2016

In-Service Q4 2017